

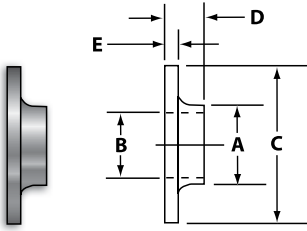
Accessories

Equipment - Thread Identification Kit.....	16-6
Flanges	16-1 — 16-2
Gaskets	16-3
Gauges	16-4
Hydraulic Preset Tools.....	16-5
Sight Glass	16-7
Sight Glass - Accessories/Replacement Parts	16-7
Systems.....	16-8 — 16-13

If you can't find it, your local Parker distributor can!

Just because it's not in our catalog doesn't mean you can't get it. To find exactly what you need, contact your local Parker distributor today. We can often provide 24-hour delivery direct from our factories to over 12,000 distribution locations worldwide. Our business is keeping you on the move.

14VB - STUB END

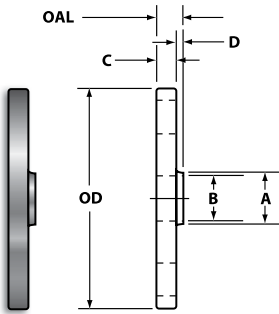


14VB

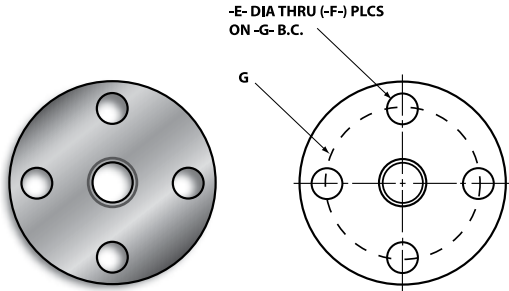
Size A (in.)	B (in.)	C (in.)	D (in.)	E (in.)
.50	0.370	1.500	.255	.130
.75	0.620	1.500	.255	.130
1.0	0.870	2.000	.255	.130
1.5	1.370	2.875	.255	.130
2.0	1.870	3.625	.255	.130
2.5	2.370	4.125	.255	.130
3.0	2.870	5.000	.291	.166
4.0	3.834	6.187	.291	.166
5.0	4.782	7.500	.345	.218
6.0	5.782	8.500	.345	.218
8.0	7.782	10.625	.345	.218

For use with 38SL Flange.

38W - WELD NECK FLANGE



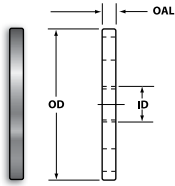
38W



38W WELD NECK FLANGE

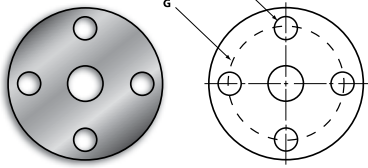
Size A (in.)	O.D. (in.)	A (in.)	B (in.)	C (in.)	D (in.)	E (in.)	F (in.)	G (in.)	OAL (in.)
0.5	3.500	.500	.370	.375	.125	.625	4	2.375	.500
.75	3.875	.750	.620	.375	.125	.625	4	2.750	.500
1.0	4.250	1.000	.870	.375	.125	.625	4	3.125	.500
1.5	5.000	1.500	1.370	.375	.125	.625	4	3.875	.500
2.0	6.000	2.000	1.870	.500	.125	.750	4	4.750	.625
2.5	7.000	2.500	2.370	.500	.125	.750	4	5.500	.625
3.0	7.500	3.000	2.870	.500	.125	.750	4	6.000	.625
4.0	9.000	4.000	3.834	.500	.125	.750	8	7.500	.625
6.0	11.00	6.000	5.782	.500	.125	.875	8	9.500	.625
8.0	13.00	8.000	7.782	.500	.125	.875	8	11.75	.625

38SL - SLIP ON FLANGE



38SL SLIP ON FLANGE

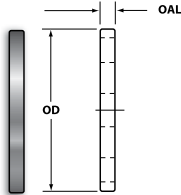
-E- DIA THRU (-F-) PLCS
 ON-G-B.C.



Size A (in.)	O.D. (in.)	I.D. (in.)	E (in.)	F (in.)	G (in.)	OAL (in.)
.500	3.500	.570	.625	4	2.375	.375
.750	3.875	.813	.625	4	2.750	.375
1.000	4.250	1.063	.625	4	3.125	.375
1.250	4.620	1.313	.625	4	3.500	.375
1.500	5.000	1.563	.625	4	3.875	.375
2.000	6.000	2.063	.750	4	4.750	.438
2.500	7.000	2.563	.750	4	5.500	.438
3.000	7.500	3.063	.750	4	6.000	.438
4.000	9.000	4.063	.750	8	7.500	.500
5.000	10.000	5.063	.875	8	8.500	.500
6.000	11.000	6.063	.875	8	9.500	.563
8.000	13.000	8.063	.875	8	11.75	.563
10.00	16.000	10.063	1.00	12	14.25	.688
12.00	19.000	12.063	1.00	12	17.00	.688

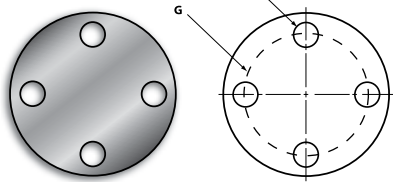
For use with 14VB Stub End.

38 - BLIND FLANGE



38 BLIND FLANGE

-E- DIA THRU (-F-) PLCS
 ON-G-B.C.



Size A (in.)	O.D. (in.)	I.D. (in.)	E (in.)	F (in.)	G (in.)	OAL (in.)
.500	3.500	.625	4	2.375	.375	.375
.750	3.875	.625	4	2.750	.375	.375
1.000	4.250	.625	4	3.125	.375	.375
1.250	4.620	.625	4	3.500	.375	.375
1.500	5.000	.625	4	3.875	.375	.375
2.000	6.000	.750	4	4.750	.438	.438
2.500	7.000	.750	4	5.500	.438	.438
3.000	7.500	.750	4	6.000	.438	.438
4.000	9.000	.750	8	7.500	.500	.500
5.000	10.000	.875	8	8.500	.500	.500
6.000	11.000	.875	8	9.500	.563	.563
8.000	13.000	.875	8	11.75	.563	.563
10.00	16.000	1.00	12	14.25	.688	.688
12.00	19.000	1.00	12	17.00	.688	.688

Accessories

General Description: Parker Performance Stainless supplies high-quality sanitary gaskets and o-rings for use with the Food, Beverage, Dairy and Pharmaceutical processing industries. These gaskets and o-rings are precision manufactured from specially formulated elastomer compounds, including Buna-N, EPDM, Viton®, Silicone and PTFE.

All gaskets and o-rings are certified to meet the specifications of FDA, 3-A Sanitary Standards and USP Class VI for pharmaceutical manufacturing.

PRODUCT LISTING

CLAMP GASKETS

- 40MPU (BUNA)
- 40MPUW (BUNA-White)
- 40MPX (Silicone-White)
- 40MPXC (Silicone-Clear)
- 40MPG (PTFE)
- 40MPE (EPDM)
- 40MPSFY (SFY)
- 40MPFU (BUNA-Flanged)
- 40MPFE (EPDM-Flanged)
- 40MPFX (Silicone-White-Flanged)
- 40MPFXC (Silicone-Clear-Flanged)
- 40MPFSFY (SFY-Flanged)
- A40MPGR (PTFE-Envelope)

ORIFICE GASKETS

- A80MPU (BUNA-Std 1/8" Orifice)
- A80MPE (EPDM-Std 1/8" Orifice)
- A80MPSFY (SFY-Std 1/8" Orifice)

SCREEN GASKETS

- 40MPSU (Std #10 Mesh*)
 - 40MPUP (Std #33 Perforated*)
- *Other Mesh Sizes Available

BEVEL SEAT GASKETS

- 40BSO (BUNA)
- 40BSS-(TM) (PTFE)
- DHR(T) (PTFE-Medium)
- DH(XT) (PTFE-Extra Thin)
- 40BSH(THD) (PTFE-Heavy Duty)
- 40BSF (Flat)

I-LINE GASKETS

- 40IH (BUNA)
- 40IE (EPDM)
- 40IT (PTFE)
- 40IV (SFY)

JOHN PERRY GASKETS

- 40JPU (BUNA)

Q-LINE GASKETS

- 40QH (BUNA)
- 40QT (PTFE)

APC GASKETS

- 101H (Gray)
- 101HX (Black)



CLAMP GASKET MATERIALS REFERENCE CHART

Gasket material is selected based upon a number of factors [temperature, product type, pressure, etc.] The following guide is offered as a reference to assist in the selection of the appropriate elastomer for your application.

Original Physical Property Characteristics	Buna-N (U)	EPDM (E)	Fluoro-elastomer (SFY)	Silicone (X)	PTFE (G)
Temperature Range	-65 To 200°F	-60 To 300°F	-20 To 350°F	-40 To 450°F	-40 To 200°F
Tensile Strength, Psi	1875	1650	1212	1340	–
Elongation, %	340	317	272	260	–
Hardness, Shore A	70	70	70	70	–
Acid Resistance	Good	Good/Excellent	Good/Excellent	Poor/Good	Good/Excellent
Resistance To Fats/Oils	Good/Excellent	Poor	Good/Excellent	Poor/Good	Excellent
Alkali Resistance	Fair/Good	Good/Excellent	Poor/Good	Poor/Fair	Excellent
Abrasion Resistance	Excellent	Good	Good/Excellent	Poor	Fair
Compression Set Resistance	Good	Fair	Good/Excellent	Good/Excellent	Cold Flows



GAUGEABILITY TOOLS

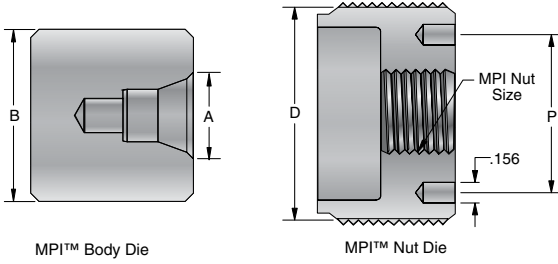
MPIF INSPECTION GAUGE



This one handy gauge works for all MPI™ sizes. The end of the gauge checks the fitting gap after make-up.

MPI™ HYDRAULIC PRESET TOOLS

MPI SMALL PRESET ASSEMBLY



MPI™ Body Die

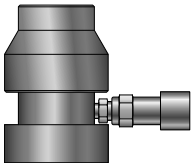
MPI™ Nut Die

Body Die Part No.	Nut Die Part No.	A (in.)	B (in.)	D (in.)	P (in.)	MPI™ Nut Size (in.)	Preset Pressure (PSIG)
4 MPI BODY DIE	4 MPI NUT DIE	.50	1.25	1.62	1.20	4	3,000
6 MPI BODY DIE	6 MPI NUT DIE	.63	1.25	1.62	1.20	6	3,500
8 MPI BODY DIE	8 MPI NUT DIE	.82	1.25	1.62	1.20	8	6,500
9 MPI BODY DIE	9 MPI NUT DIE	.88	1.25	1.62	1.20	9	8,000

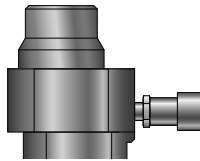
MPI LARGE PRESET ASSEMBLY

Body Die Part No.	Nut Die Part No.	A (in.)	B (in.)	D (in.)	P (in.)	MPI™ Nut Size (in.)	Preset Pressure (PSIG)
*9 MPI BODY DIE	9 MPI LARGE NUT DIE	.88	1.25	2.00	1.67	9	3,400
12 MPI BODY DIE	12 MPI NUT DIE	1.13	1.75	2.00	1.67	12	5,100
16 MPI BODY DIE	16 MPI NUT DIE	1.44	1.75	2.00	1.67	16	8,000

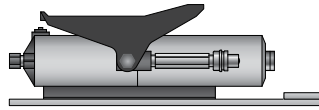
* Requires a 9 MPI BODY DIE ADAPTER



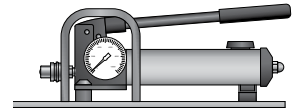
PARKER PART NO.
**MPI SMALL
 PRESET ASSEMBLY**



PARKER PART NO.
**MPI LARGE
 PRESET ASSEMBLY**



PARKER PART NO.
MPI AIR PUMP KIT



PARKER PART NO.
MPI HAND PUMP KIT

Note: One Pump Kit, Preset Assembly, Body Die and Nut Die are required for presetting. Pump Kits and Preset Assemblies can be interchanged but Body Dies and Nut Dies are for a specific Preset Assembly. Detailed operating instructions are included with each kit.

EQUIPMENT

THREAD IDENTIFICATION KIT



Metric thread identification kit contains an illustrated booklet containing information about metric and multi-standard fittings and ports. The kit also contains a U.S.A. thread gauge for identifying eight different thread and pitch angles: an international thread gauge for identifying metric, British and Japanese threads, both taper and parallel; and a stainless steel inside/outside caliper with dual inch/millimeter scales.

Part No.

MIK-1

Accessories

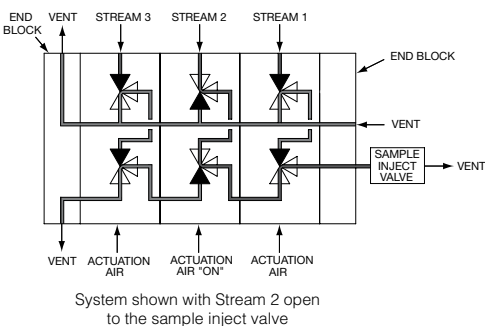
General Description: The Parker R-max™ is a multi-functional system capable of integrating both stream switching and filtering into one unique compact assembly. The system is designed to control both gases and liquids in analytical systems ranging from vacuum to 500 psig while requiring only 40 psig actuating air pressure. The system was engineered with a focus on improved product reliability and reduced cost of ownership. The Parker R-max™ Stream Switching System utilizes state-of-the-art surface mount technology to reduce leak paths, internal volume, and dead volume. With surface mounting, system components may be easily removed and replaced without breaking process connections. In addition, the Parker R-max™ system utilizes an internal self-purging outlet header to eliminate the need for an additional outlet loop.

- Features:**
- Surface Mount Technology enhances maximum system flexibility and enables the user to add additional streams to a system without interrupting installed units.
 - PCTFE Sealing Technology provides maximum sealing capability for both gases and liquids to eliminate leakage often found when using elastomeric O-ring seat designs.
 - Low Internal Volume ensures maximum system efficiency by reducing purge time and expensive purge gas.
 - Modular Valve Design offers maximum serviceability for quick and easy in-system repair and reduced downtime.
 - Internal Loop Design eliminates the need for an external loop and provides maximum capability with minimum system footprint.
 - Visual Position Indicator enables the user to easily determine valve position for maximum system safety.
 - Low Actuation Pressure design for maximum sealing capability with minimum air supply needs.
 - Patent Pending

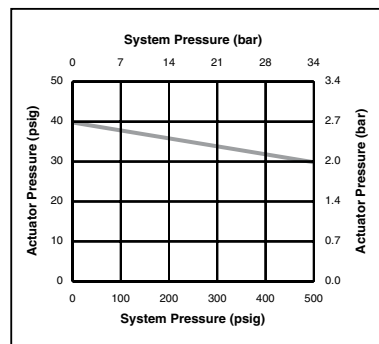
Specifications:

PRESSURE RATING	TEMPERATURE RATINGS	FLOW DATA (IN A TWO STREAM SYSTEM)
500 psig CWP	Fluorocarbon Rubber -15 °F to 400 °F	Stream 1: $C_v = 0.128$; $x_1 = 0.64$
	Buna-N Rubber -30 °F to 275 °F	Stream 2: $C_v = 0.099$; $x_1 = 0.68$
	Ethylene Propylene Rubber -70 °F to 275 °F	Tested in accordance with ISA S75.02.
	Neoprene Rubber -45 °F to 250 °F	Gas flow will be choked when $P_1 - P_2 / P_1 = x_1$.
	Highly Fluorinated Fluorocarbon Rubber -25 °F to 200 °F	

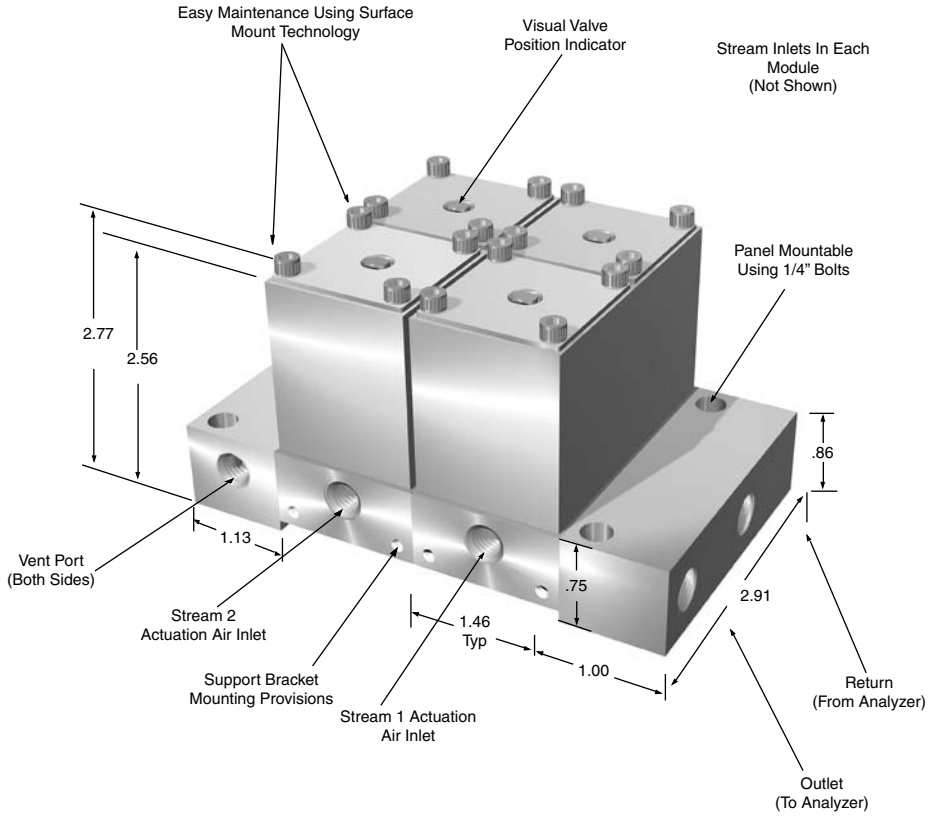
Flow Diagram - Three Stream Switching System



Actuation Pressure vs. System Pressure



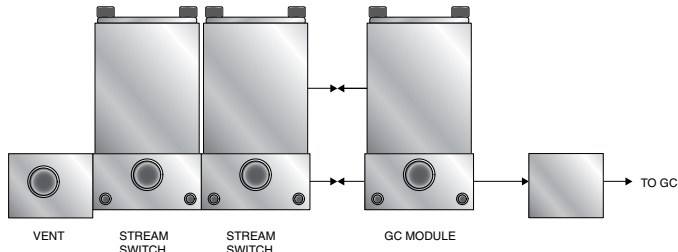
FACTORY ASSEMBLED TWO MODULE STREAM SWITCHING SYSTEM



General Description: The GC Module is positioned between the analyzer and stream switching system and is used to equilibrate the sample loop pressure to atmospheric pressure just prior to the sample injection. This ensures a constant sample pressure in repetitive analyses. When the GC is actuated, the sample from the GC is routed to the low pressure vent.

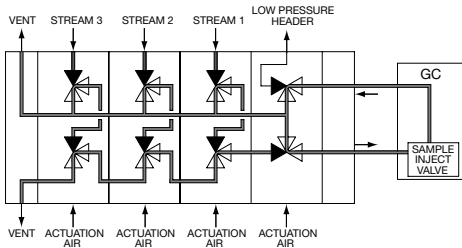
MULTI-STREAM SWITCH WITH GC MODULE

R2GC



Example Shown: Two streams with GC Module

GC MODULE FUNCTION - THREE STREAM EXAMPLES



Accessories

STREAM SWITCHING SYSTEMS AND ACCESSORIES

HOW TO ORDER

The correct part number is easily derived by following the circled number sequence. The seven product characteristics required are coded as shown below.

Example: **2F** - **R2** - **K** - **V** - **SS** - **2**
 ① ② ③ ④ ⑤ ⑥ ⑦

Describes a complete two stream switching system having 1/8" female NPT inlet and outlet ports, PCTFE valve seats, fluorocarbon rubber seals, and stainless steel construction.

Example: **2F** - **R2** - **GC** **K** - **EPR** - **SS** - **4**
 ① ② ③ ④ ⑤ ⑥ ⑦

Describes a complete four stream switching system with GC Module having 1/8" female NPT inlet and outlet ports, PCTFE valve seats, ethylene propylene rubber seals, and stainless steel construction.*

① End Connection	② Valve Series	③ Base Option	④ Seat Material	⑤ Seal Material	⑥ Body Material**	⑦ Number of Modules*
2F 4A7 4Z7	R2	Blank - None GC - GC Service LS - Lab Switch EM - Valve Expansion Module S - Single Valve	K - PCTFE	V - Fluorocarbon Rubber BN - Buna-N Rubber EPR - Ethylene Propylene Rubber NE - Neoprene Rubber KZ - Highly Fluorinated Fluorocarbon Rubber	SS - Stainless Steel M - Alloy N04400	Numeric Value Blank - LS, EM or S Base Options

*The number of stream modules should not include a GC module in the count if ordered as part of the system.

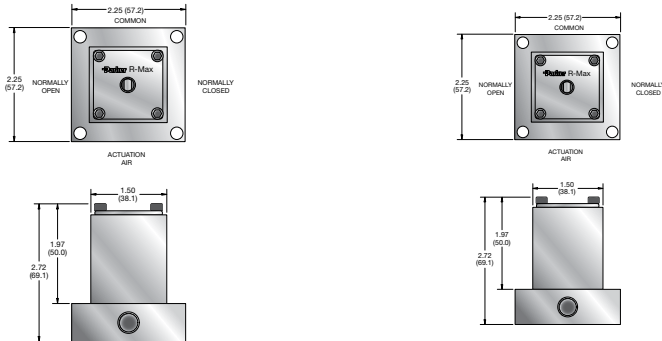
**Alloy N04400 not available on Single Valve units

General Description: The Parker R-max™ Single Valve shares the same technology, features, and options found in the Stream Switching System. The pneumatically actuated valve serves as a three-way diverting valve with common, normally open, and normally closed porting.

Features:

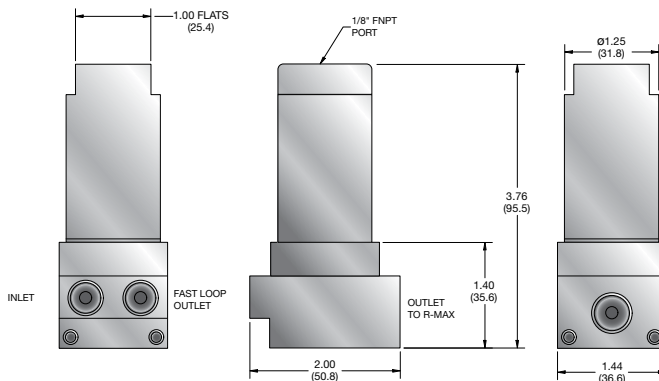
- Surface Mount Technology
- PCTFE Sealing Technology
- Low Internal Volume
- Modular Design
- Visual Position Indicator
- Low Actuation Pressure

SINGLE VALVE



General Description: Designed to be used on the stream inlet ports of the Parker R-max™ Stream Switching System to provide reduced transport time of filtered sample stream media from the process line through the stream switch to the analyzer. This is achieved by diverting approximately 90% of the inlet flow around the cartridge filter and out of the filter bowl.

FAST LOOP FILTERS



Accessories

FAST LOOP FILTERS

HOW TO ORDER

The correct part number is easily derived by following the circled number sequence. The seven product characteristics required are coded as shown below.

Example: **2F** - **FR2** **EPR** **S** **100** - **SS** - **B**
 ① ② ③ ④ ⑤ ⑥ ⑦

Describes a FR2 Series Fast Loop Filter with 1/8" FNPT inlet and bypass outlets, ethylene propylene rubber seals, 100 micron 316SS sintered metal filter element, stainless steel construction, and designed to be attached to a Parker *R-max*™ Stream Switch having inverted CPI™ or A-LOK® stream inlet ports.

① Inlet and Bypass Outlet	② Filter Series	③ O-Ring Seals	④ Filtration Type	⑤ Element Type		⑥ Body Material	⑦ R-Max™ Connection Type
				Balston® P and C	Sintered Metal (S)		
2F - 1/8" Female NPT	FR2	V - Fluorocarbon Rubber	P - Particulate C - Coalescing S - Sintered Metal	93 - 93% Microfibre	100 - 100 micron	SS Stainless Steel	A - 2F B - 4A7 or 4Z7
		BN - Buna-N Rubber		99 - 99% Microfibre	70 - 70 micron		
		EPR - Ethylene Propylene Rubber		20 - 20 micron	40 - 40 micron		
		NE - Neoprene Rubber		10 - 10 micron	20 - 20 micron		
		KZ - Highly Fluorinated Fluorocarbon Rubber		5 - 5 micron			

